

Creating Greener Communities

County Strategic Context

Peter Wiggins

Outcome Manager – Community Infrastructure

Gloucestershire County Council

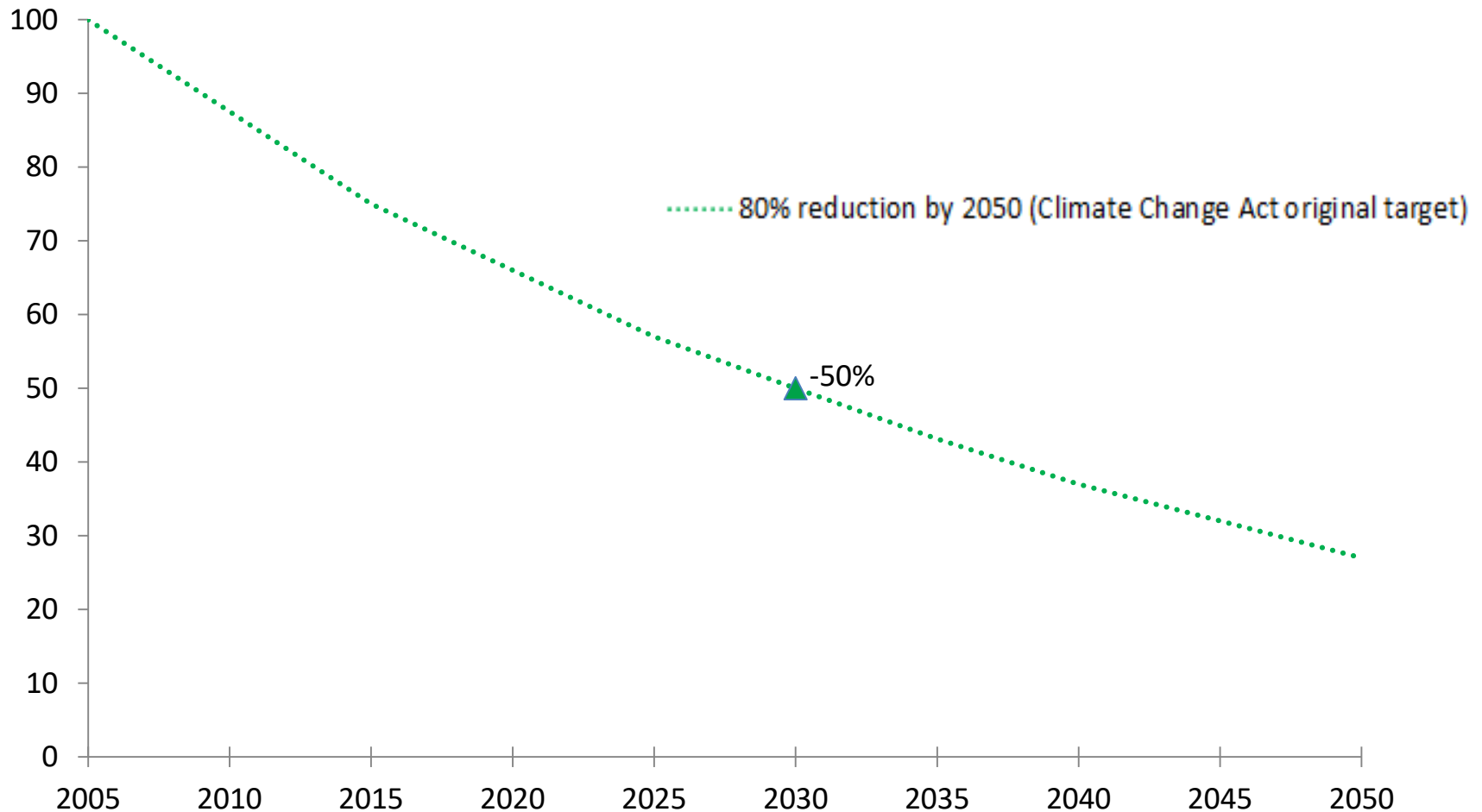
Leadership Gloucestershire

- *To provide vision, leadership and strategic direction in those areas where it is vital for organisations to work together to meet the needs of the people and communities of Gloucestershire in the most cost-effective way.*
- 7 local authorities' Leaders & Chief Execs/ Lead Directors (Gloucestershire Leader chairs)
- Gloucestershire Clinical Commissioning Group, Chair & Accountable Officer
- Police & Crime Commissioner and Chief Constable
- GFirst, Local Enterprise Partnership, Chair & Chief Exec

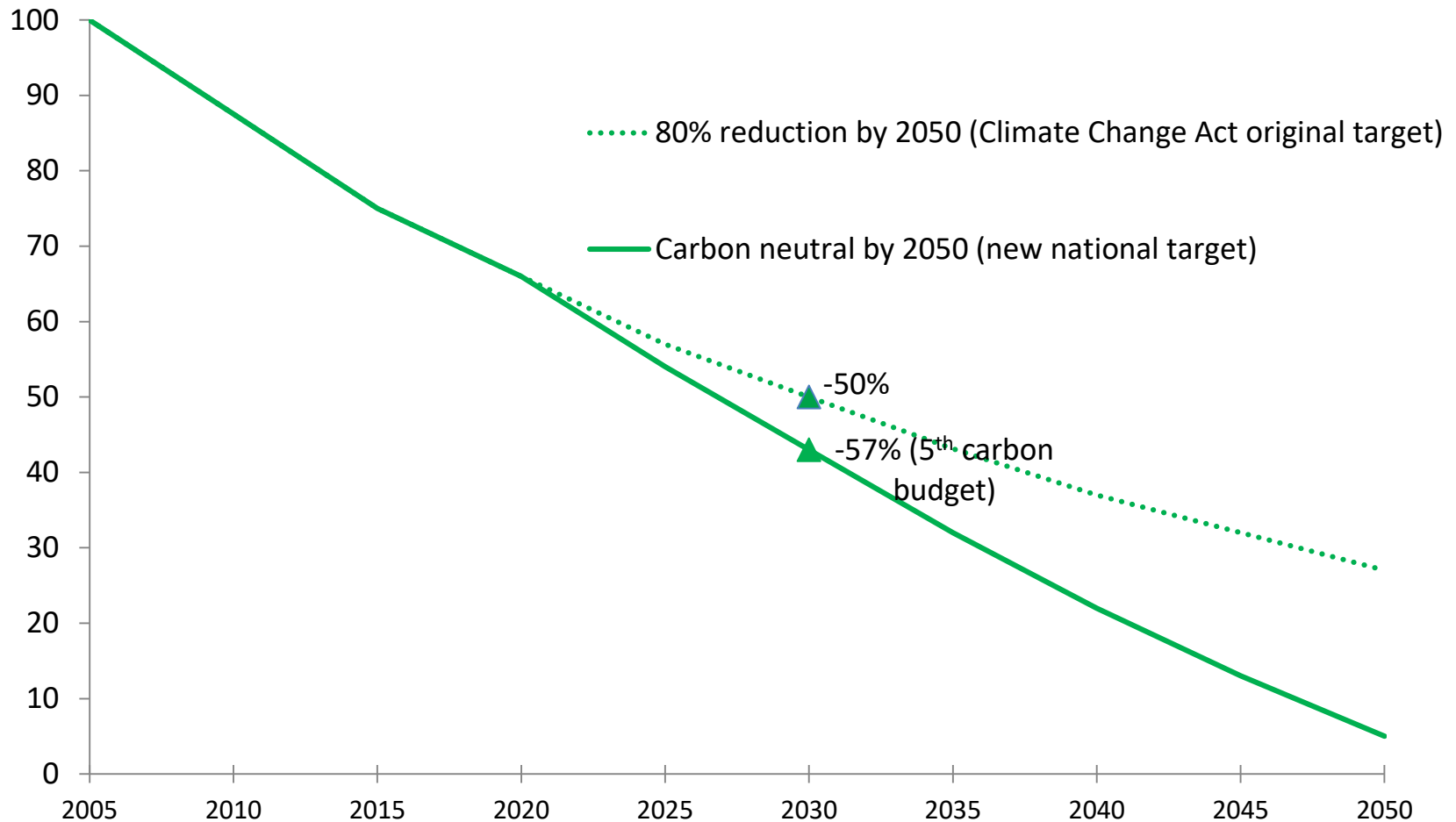
Motion 836, 15th May 2019

- Climate emergency declared
- Reduce corporate carbon emissions by at least 80% by 2030; with the remaining being offset, resulting in a “net zero” organisation
- Deliver a carbon neutral county by 2050
- Work with partners to identify what measures would be needed to deliver a stepped target of 80% carbon reduction by 2030

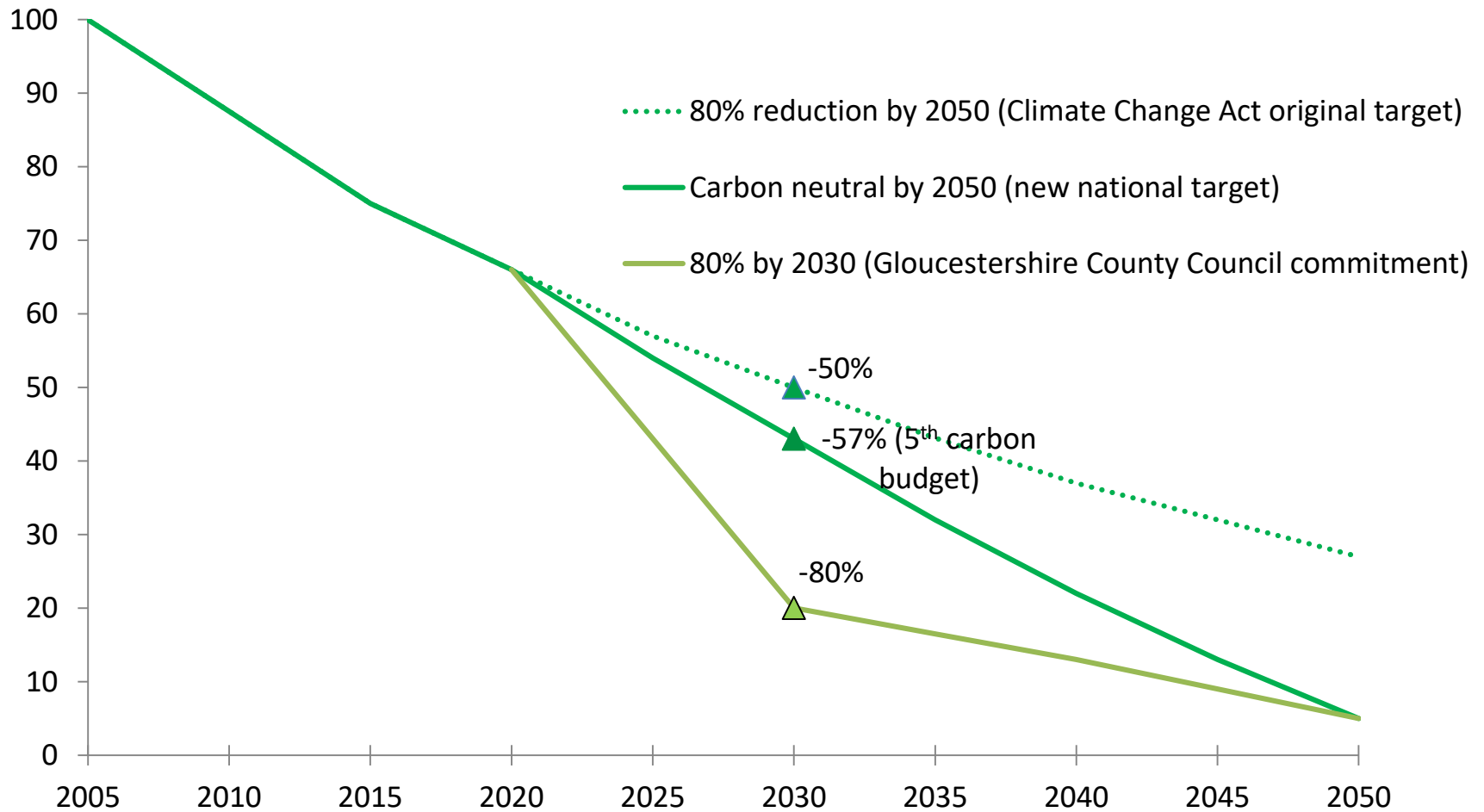
Gloucestershire carbon emissions reduction trajectory to 2050



Gloucestershire carbon emissions reduction trajectory to 2050



Gloucestershire carbon emissions reduction trajectory to 2050



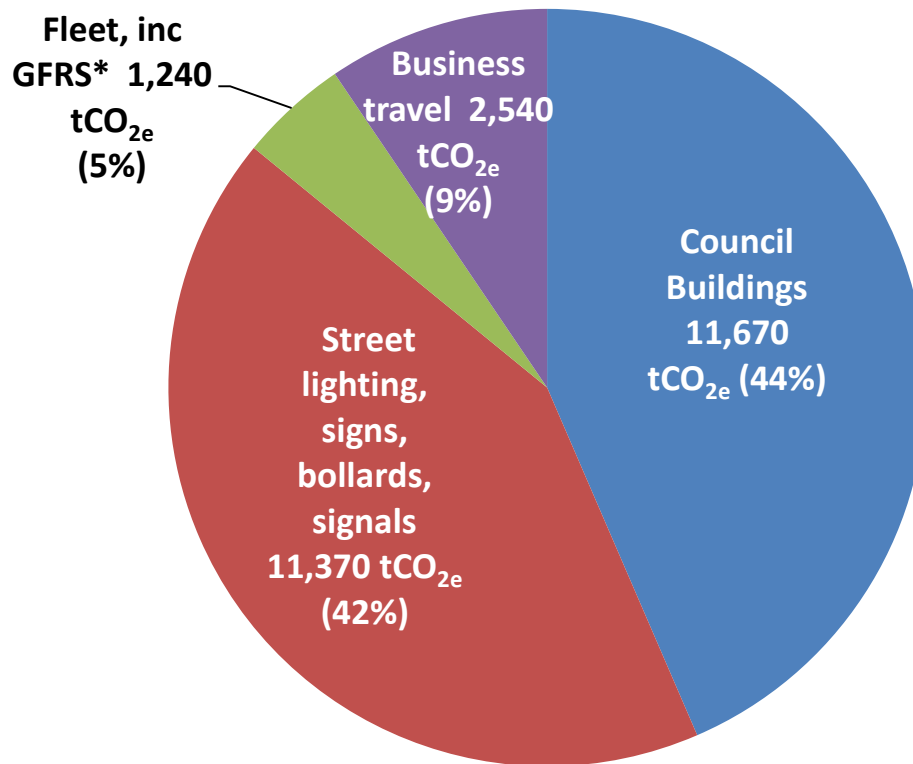
What the council has done already

- early beginnings

- 2005 Carbon Management Programme (CMP) with The Carbon Trust
- Joined the “10:10” initiative
 - **10% reduction on baseline (2006) by 2010**
- £1m Salix Finance Recycling Fund (50% GCC)
 - **£3.4m invested to date**
- 2008 Climate Change Strategy & Action Plan
 - *Nottingham Declaration on Climate Change*

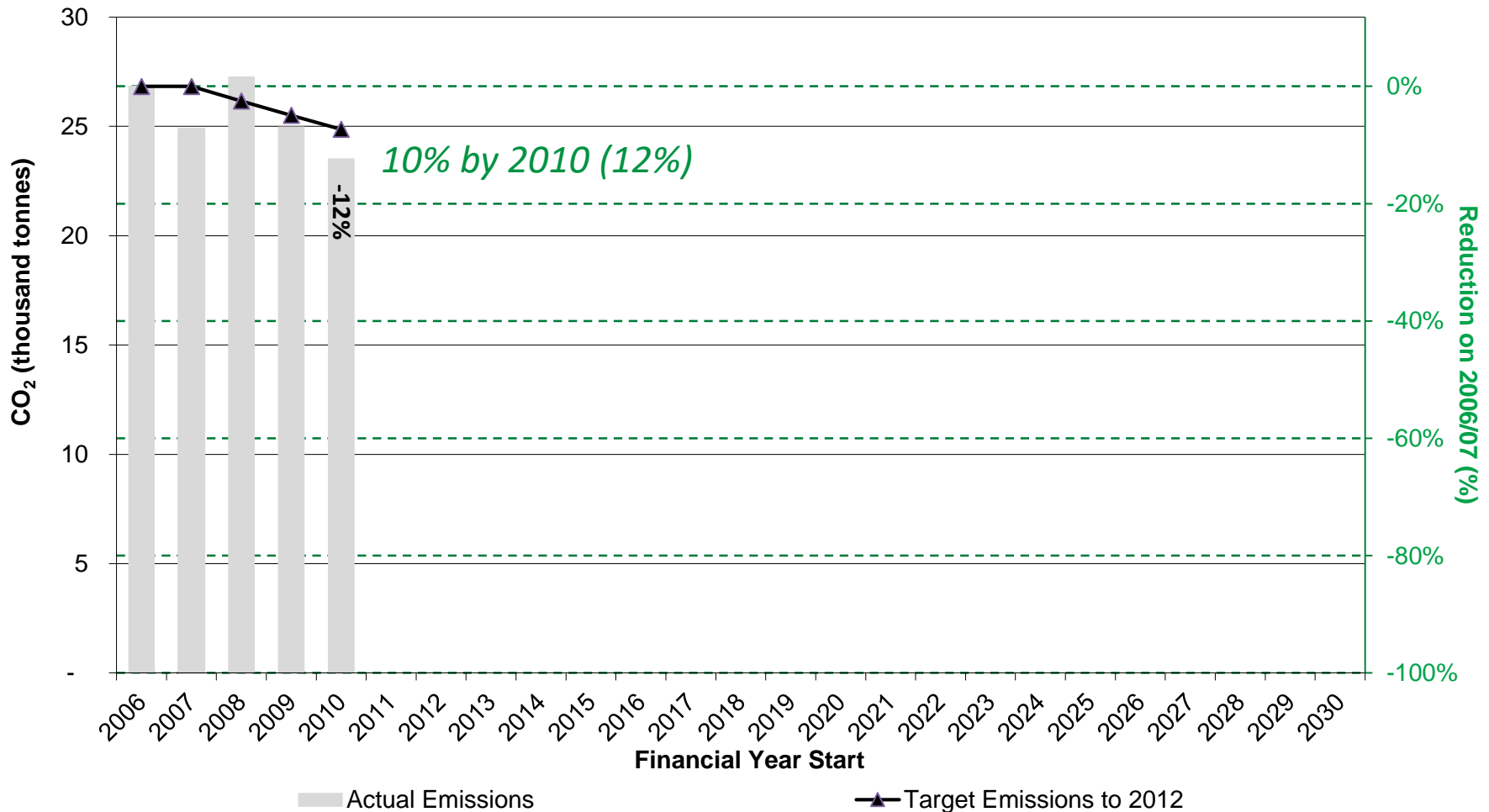


2006/07 Baseline



*Gloucestershire Fire & Rescue Service

Reducing our emissions - early beginnings



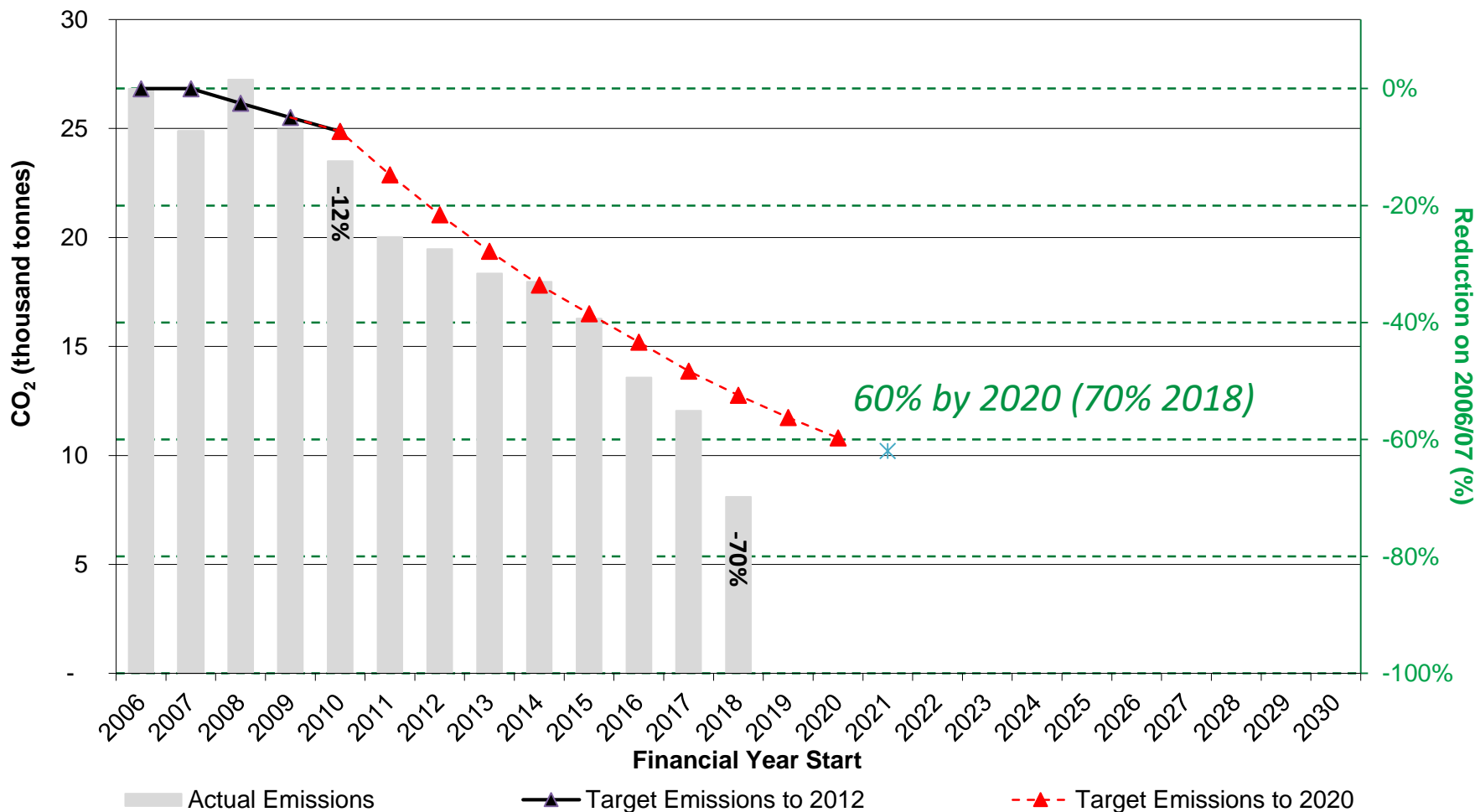
Reducing our emissions

- a step change in ambition

- 2010 refreshed CMP
- New target adopted 2011
 - *to reduce corporate carbon emissions by 60% by 2020/21 against our 2006/07 baseline*
- Mirrored the trajectory of the UK Climate Change Act 2008 (at that time)
 - *80% reduction target by 2050 (57% by 2032)*

Reducing our emissions

- a step change in ambition



Reducing our emissions

We've done almost all we can energy efficiency-wise

- Insulation – loft, wall, roof, pipes
- Heating & lighting upgrades and controls, remote Building Energy Management System (BEMS)
- Office rationalisation
- Shire Hall refurbishment, inc cladding, new windows, open plan, PV
- 2,500 desktop printers to Multi-Functional Devices (MFDs)
- ICT – server virtualisation, moved off-site, upgrades, thin client
- LED street lights with Central Management System, bollard de-illumination, LED signs & bollards
- Staff pool cars pilot – inc EVs and EV plug-in hybrids
- **Saving over £2m a year**

LED Street Lighting with CMS



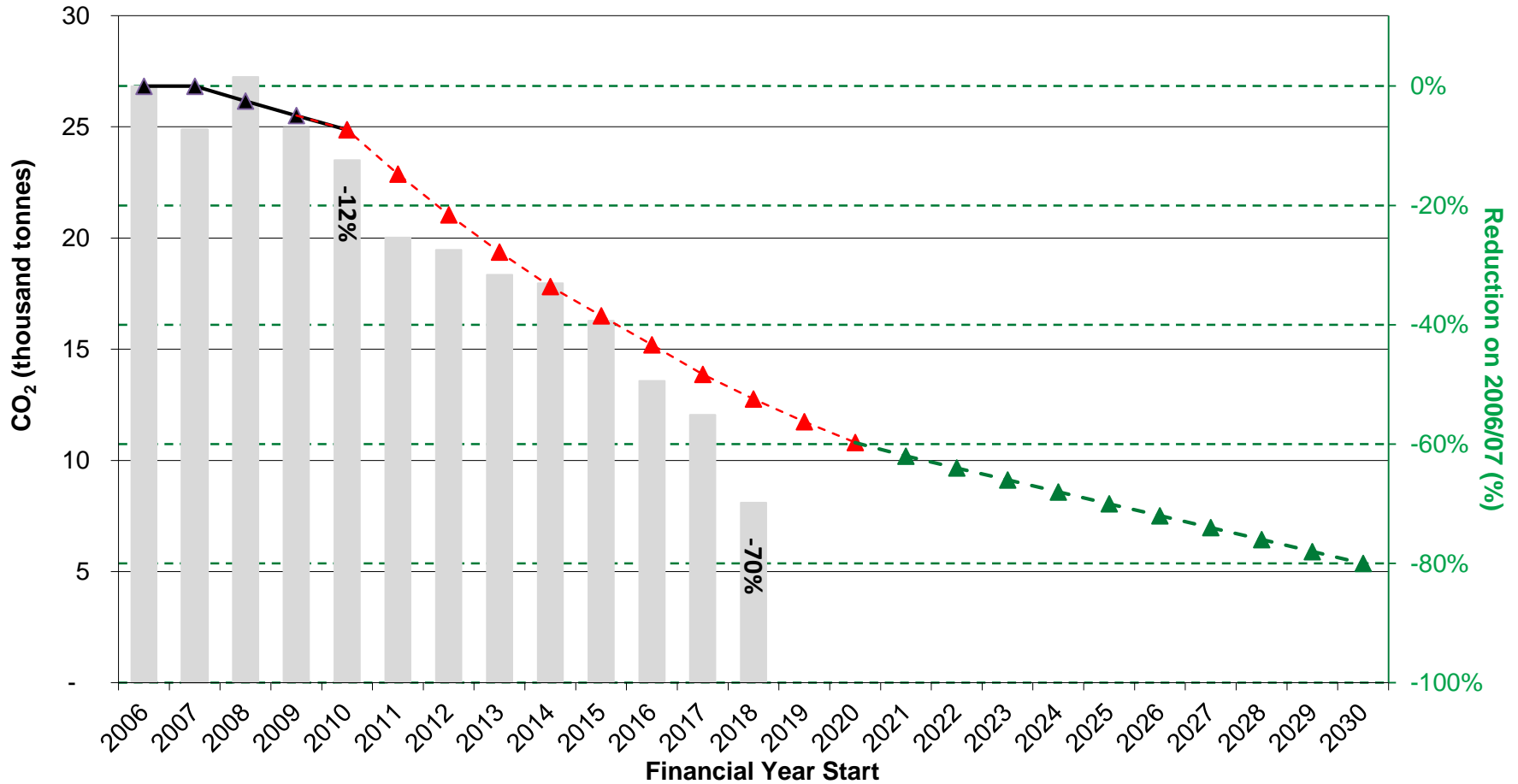
- £13.7m over 3.5 years
- 60,000 street lights
- 70% dimming residential areas
- 50% dimming main traffic routes
- **Saving £1.1m pa**

Shire Hall, Gloucester



- Cladding
- New windows
- Heating sensors, lighting, controls
- Reinstate open plan
- Solar PV roof and integrated to rear (Blocks 5 & 6)
- **2017/18 saving 240 tCO_{2e} (2% of total)**

Getting to 80% by 2030

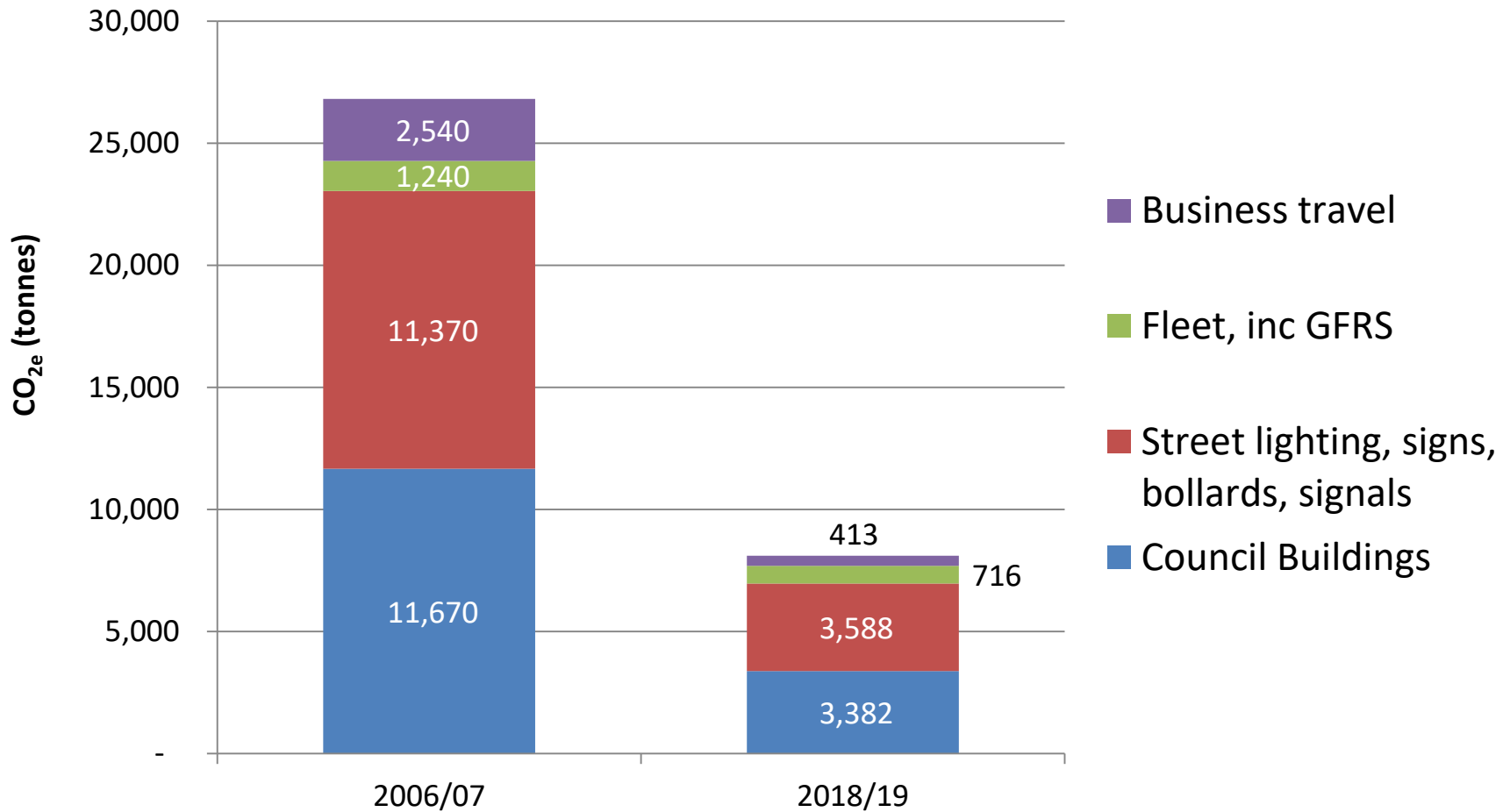


Actual Emissions
 Target Emissions to 2012
 Target Emissions to 2020
 Target Emissions to 2030

Getting to 80% by 2030

- LED lighting at station car parks
- Additional office improvements
- Staff business travel – scaling up pool cars
- Renewable energy generation
- EV charging infrastructure (£470k)
- Green energy procurement
- (Investment in others' renewable projects)
- **Council's £1m Salix Fund to be made available to all Gloucestershire public sector organisations**

Emissions reduction on the baseline



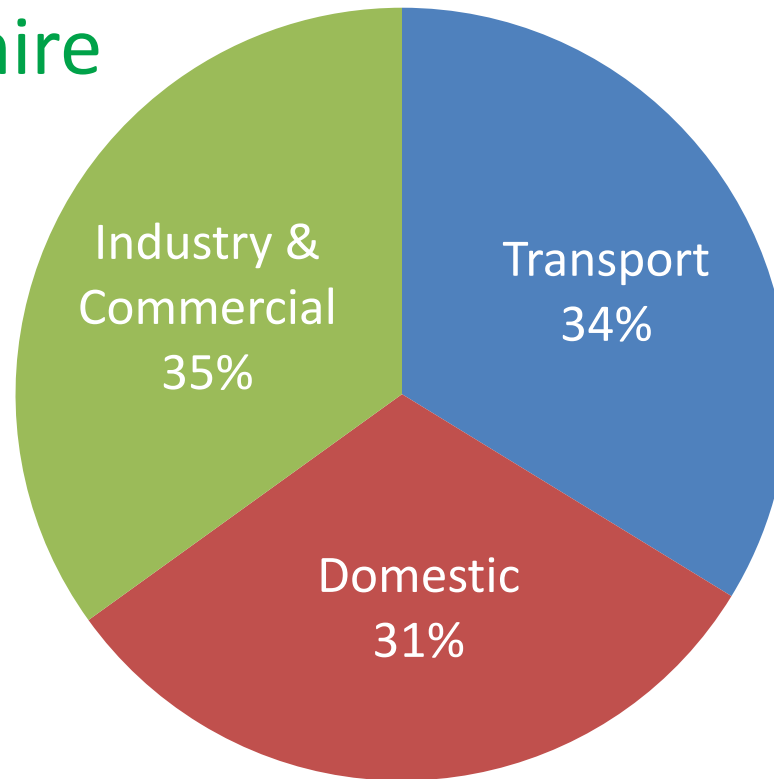
Responding to the Climate Emergency...

Climate change strategy & action plan, 2019/20 to 2024/25

- 5 years, annual rolling action plan
- Overarching strategy for Gloucestershire
- What the council is going to do
- Working with partners to deliver
- Enabling everyone to play their part

Where our carbon comes from...

Gloucestershire Emissions 2017*

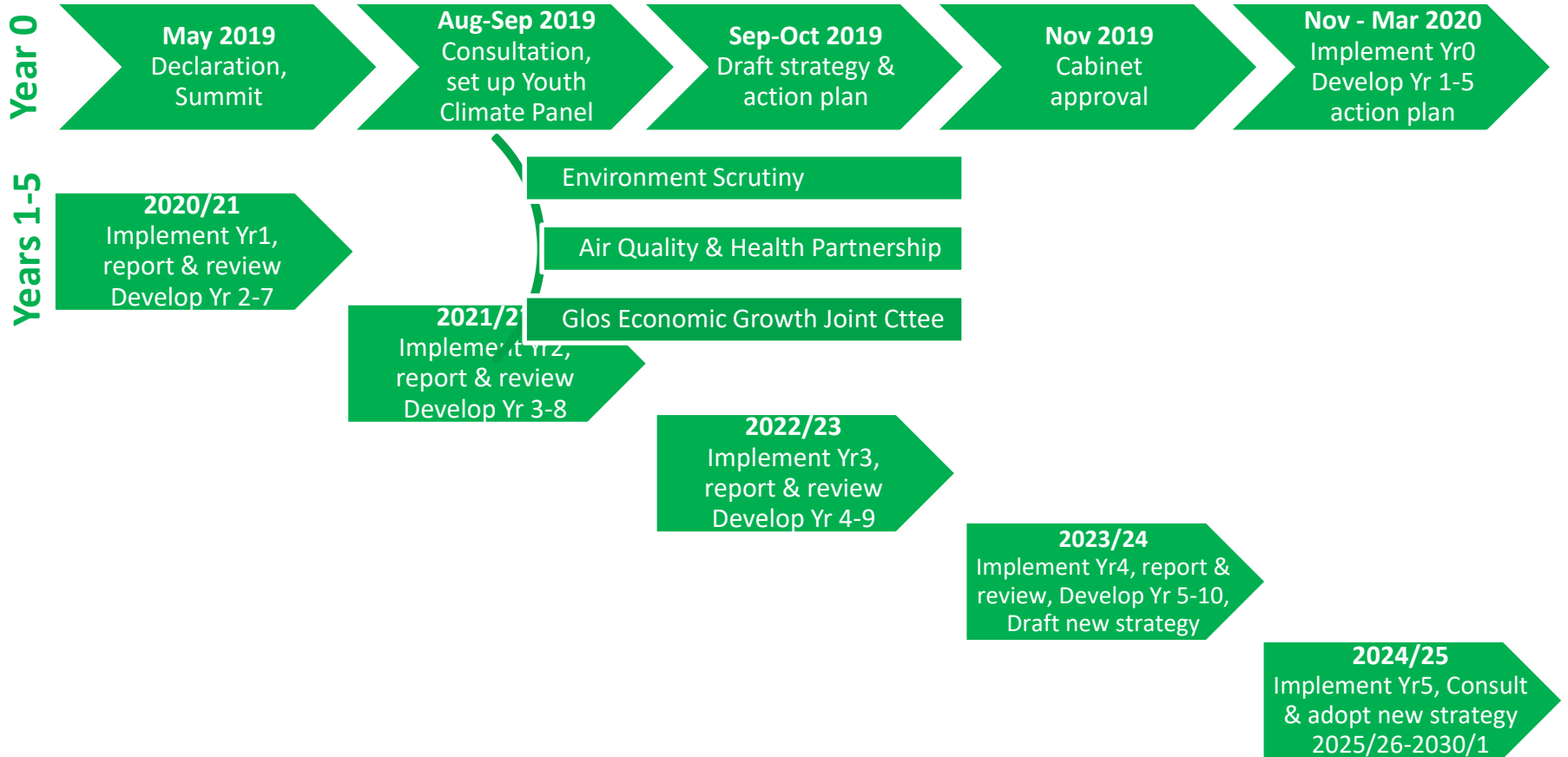


*BEIS (5 February 2019), 2017 UK Greenhouse Gas Emissions, Final Figures – Statistical Release

Summit Outcomes, 21st May

- c120 enthusiastic and innovative people from public, private, voluntary sector
- Outcomes and actions from the summit were, to:
 - Develop an **engagement plan**, inc setting up a **Youth Panel**, and come back to delegates with the proposed approach
 - Use the outcomes from the summit to develop a **revised Climate Change Strategy** for Gloucestershire and the council, for **public consultation** in the summer
 - Following the consultation, take it to the council's **Cabinet for approval**
 - Feed the strategy recommendations into **Leadership Gloucestershire**

Strategy Timeline 2019/20-2024/25



Youth Climate Panel

- Age 16-25 (engaging schools separately)
- 58 applications, 40 selected – at least 5 from each district
- Give young people a voice on climate change issues, giving members the platform to influence and have their say on how we respond to the climate emergency together.
- Give feedback on the draft Climate Change Strategy.
- Give young people and insight on how Leadership Gloucestershire organisations will tackle climate change issues.
- Help the council fulfil its climate commitments.
- Assist the council to empower residents to take action on Climate Change, providing insight into how to encourage people to take responsibility for their behaviours.

Public Consultation

- Future Focus
 - [Web consultation](#) (23 Aug to 23 Sep)
 - Phone survey of 1,000 residents and 200 businesses
 - To give a representative sample of the county's views on climate change related issues.
 - Over 2,263 online responses

Public Consultation

- Whether concerned about the impacts of climate change, and about what
- Understanding of the term ‘carbon neutral’ and whether feel is achievable by 2050
- What they feel the benefits are of reducing the effects of climate change
- What could households do to have the greatest impact on reducing climate change and which have they done already

Public Consultation

- What would encourage their household to do more to reduce it's carbon footprint
- What will have a big or small impact on reducing climate change in the county
- Demographic information

Motion 844, 11 September 2019

Cross-party support to make developers go carbon neutral

Published 18.09.2019

A motion calling for all new public buildings and developments in Gloucestershire to be carbon neutral has been unanimously backed by councillors.



At a meeting of the full council on Wednesday 11 September, Cllr Paul Hodgkinson, leader of the Liberal Democrat group, proposed a motion calling on Gloucestershire County Council to take further steps to tackle the climate emergency.

The motion, which was supported by all councillors following amendment, requested that the cabinet work with the NHS, Gloucestershire Constabulary and district councils to ensure that all new public buildings and residential and commercial developments in Gloucestershire support the move to zero carbon. About 60,000 new homes are due to be built in the county over the next 20 years – about 3,000 a year.

It comes after a climate emergency was declared by the council in May. It aims to become carbon neutral as an organisation by 2030 and is identifying measures to deliver an 80 per cent reduction in greenhouse gas emissions across the whole county by the same date.

Next steps

- Revised Climate Change Strategy & Action Plan
 - Outcomes from the summit
 - Youth Climate Panel meetings views
 - Public consultation outcomes
- Cabinet, 13 November
- Leadership Gloucestershire, 19 December
- Council budget setting process up to Feb 2020

To get in touch...

glosclimate@gloucestershire.gov.uk

peter.wiggins@gloucestershire.gov.uk

01452 328536