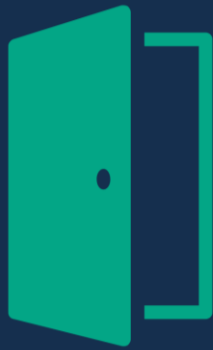


**CARERS
TRUST**

No Wrong
Doors for
Young
Carers



@carerstrust



@carerstrust



@carers.trust

“No Wrong Doors for Young Carers” Launch Event

We will be starting at 10am

Welcome and housekeeping

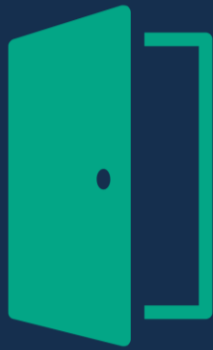
- Please ensure microphones are on mute
- We will be recording the session and will make both the recording and the slides available after the event
- Please put any questions in the chat
- Any unanswered questions will be followed up after the event
- Join in the conversation on X/Twitter - @CarersTrust

Objectives for today

1. Increase your understanding of what “No Wrong Doors for Young Carers” is
2. Increase your knowledge around resources available to support implementation of “No Wrong Doors for Young Carers”
3. Help you to think about how you might be able to implement “No Wrong Doors for Young Carers” in your local area.

**CARERS
TRUST**

No Wrong
Doors for
Young
Carers



@carerstrust



@carerstrust



@carers.trust

Welcome

Simon Williams

Partners in Care and Health

Director of Adult Social Care Improvement



Why “No Wrong Doors for Young Carers” is needed

- There are now estimated to be over 1 million young carers across the UK; that equates to 2 young carers per class.
- It takes an average of 3 years for young carers to be identified and linked into support; some go for more than 10 years without any support
- Young carers are most commonly identified by schools, followed by children’s social care. Very few young carers are identified within adult social care or health settings
- Young carers have been identified as a theme in Child Safeguarding Practice reviews
- Both the APPG for Young Carers and Young Adult Carers and the Care Quality Commission have highlighted transitions as an area where more work is needed.
- Numerous studies have highlighted the physical and mental health impact of caring responsibilities on young people.

There are almost 15,000 children caring for over 50 hours each week

Why “No Wrong Doors for Young Carers” is needed



Centre Court at Wimbledon has a capacity of 14,979.

If you gave a ticket to every young carer caring for more than 50 hours per week, you would have 131 seats left...

(and over 3000 of those tickets would have gone to children aged 5 to 9...)



Why “No Wrong Doors for Young Carers” is needed

Legislation/guidance

- Care Act 2014
- Children Act 1989 (as modified by the Children and Families Act 2014)
- Health and Care Act 2022
- The Care and Support (Assessment) Regulations 2014
- Young Carers (Needs Assessment) Regulations 2015
- Care and Support Statutory guidance
- Working Together to Safeguard Children
“Adult social care services should liaise with children’s social care services to ensure that there is a joined-up approach when both carrying out such assessments and in the provision of support to families where there are young carers or parent carers.”
- Discharge from mental health inpatient settings
Statutory Guidance

Assurance

- CQC Adult Social Care Assurance framework
- OFSTED Inspecting Local Authority Children’s Services (ILACS) framework
- CQC ICS assurance (Health and Care Act 2022 duties)



Why “No Wrong Doors for Young Carers” is needed

Emma Saunders
Young Adult Carer
Adult Social Care practitioner



“No Wrong Doors for Young Carers”

- 1. “No Wrong Doors for Young Carers” Memorandum of Understanding**
- 2. “No Wrong Doors for Young Carers” Implementation Checklist**
- 3. “No Wrong Doors for Young Carers” Suggested ‘to-do list’**

Other supporting resources

- 1. Young Carers Needs Assessments Checklist**
- 2. Transitions Assessments Checklist**



“No Wrong Doors for Young Carers” The MoU

- 1. Key principles**
- 2. Local context**
- 3. Identifying young carers and promoting wellbeing**
- 4. Assessment, information and support**
- 5. Transition to adulthood**
- 6. Information sharing**
- 7. Safeguarding and partnership working**
- 8. Putting these intentions into action and accountability**



“No Wrong Doors for Young Carers” – Who should be the signatories?

As a minimum:

- 1. Director of Adult Social Care Services**
- 2. Director of Children’s Social Care Services**
- 3. Chief Exec/Chair of Integrated Care Board**

Other potential signatories:

- Drug and alcohol service(s)
- Early help/family support (if separate to children’s social care)
- Education
- Hospital trusts
- Local carer organisations
- Mental health trust
- Primary care representative
- Public health representative

Leeds young carers and a city-wide partner approach



Sophie Parker – Leeds Young Carers Support Service Manager – Family Action

Sophie.parker@family-action.org.uk

Amanda Bradley – Operational Lead for young carers / Cluster Lead – Leeds Local Authority

Amanda.Bradley@leeds.gov.uk

Gemma Crooks – 0-19 Clinical Team Manager – Leeds Community Healthcare NHS Trust

g.crooks@nhs.net



Young Carers in Leeds



2019 Young Carers Working Group established

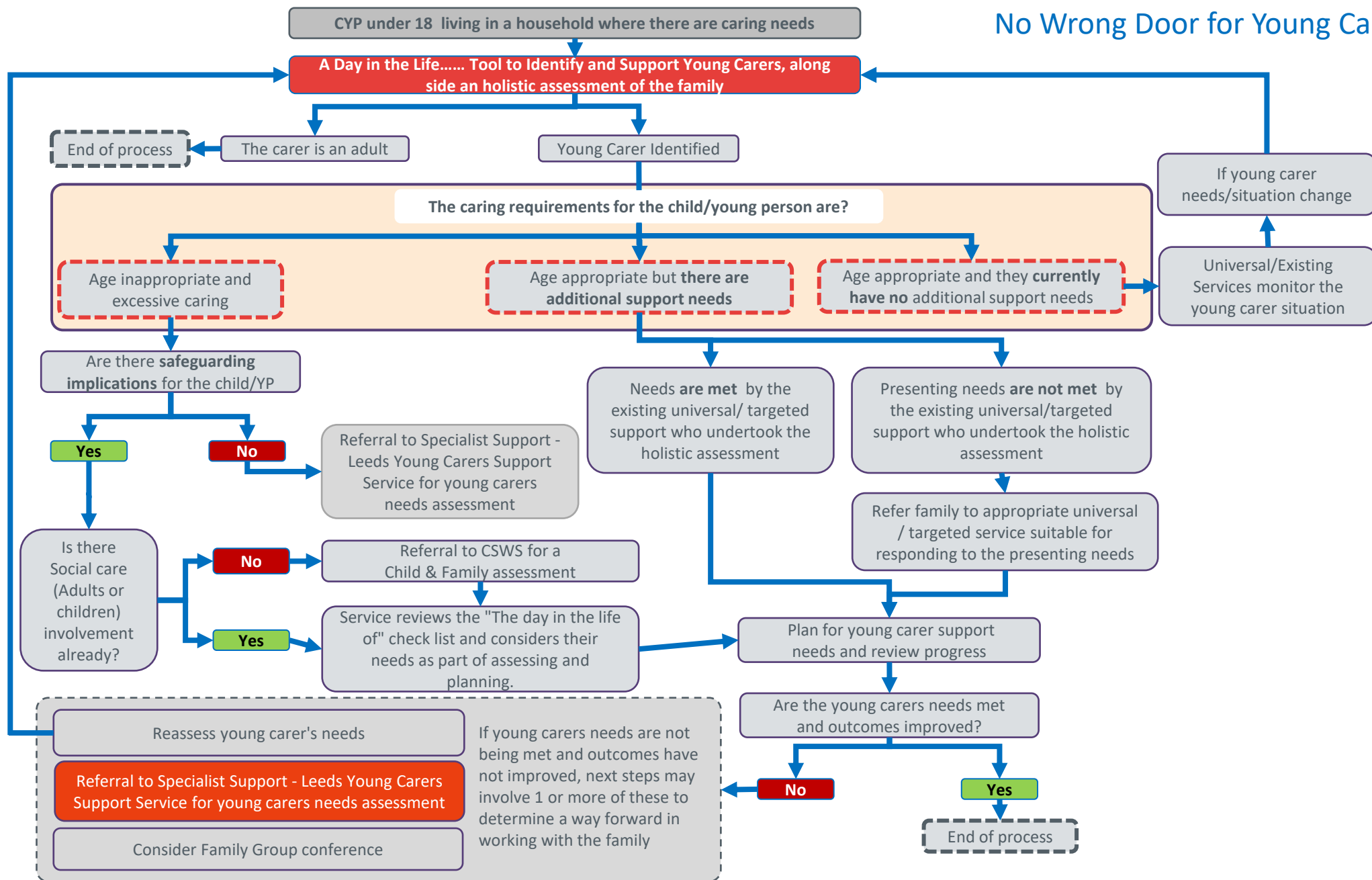
MOU signed off by Adults, Childrens, Health

Previous charity commissioned – resilience based approach

Family Action commissioned April 2020

No wrong doors pathway and Brief assessment tool launched Nov 2022





Responsibilities for identifying and supporting young carers are placed on the local authority as a whole. These responsibilities are set out in the Children’s Act 1989 (as amended by the Children and Families Act 2014) and under the Care Act 2014. Section 96 of the Children and Families Act 2014 introduces new rights for young carers to ensure young carers and their families are identified and their needs for support are assessed.

From April 2015 all young carers will be entitled to an assessment of their needs from the local authority. This new provision works alongside measures in the Care Act 2014 for transition assessment for young carers as they approach adulthood, and for assessing adults to enable a “whole family approach” to providing assessment and support.

These obligations further explained in The Young Carers (Needs Assessments) Regulations 2015 and in Guidance related to both of these Acts and “Working Together to Safeguard Children” (DfE – 2015).



MoU in practice – what does this look like for Leeds?



- **Working Group**
 - Cross sector representation
 - Clear action plan
- **Alignment of early help and young carers as “everyone’s business”**
 - Cluster model
 - Community and Family Hubs
- **Awareness Raising and system changes**
 - Training offer
 - Relationship building
- **We Are Young Carer Friendly Leeds Programme**
 - Designated Leads for Young Carers
 - Identification, Impact and Policy Change



0-19 service Implementation of We Are Young Carer Friendly Leeds



Changes

- Regular staff training updates
- Template development – expectation of a Routine enquiry at all contacts by all staff within the service
- Developed a 0-19 Pathway to support the identification and interventions for Young Carers
- 0-19 Young Carer champions to support teams and share knowledge
- Young Carer lead attendance at local and national working groups - building professional relationships
- Increasing community awareness via 0-19 Social media posts

Benefits

- Increased staff awareness regarding the impact of being a Young Carer
- Increased identification of Young Carers
- Earlier Interventions able to be offered
- WAYCFL Action plan providing on-going support and review points.

Challenges

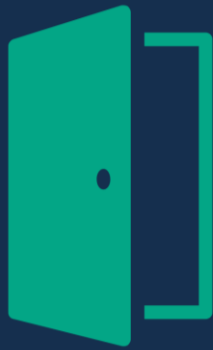
- Staff confidence and consistency asking the routine enquiry and offering appropriate support
- Staffing capacity to offer support when a large volume of young people are identified during community level interventions



**Building
stronger
families**

**CARERS
TRUST**

No Wrong
Doors for
Young
Carers



@carerstrust



@carerstrust

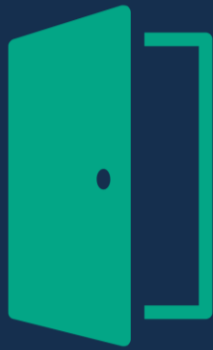


@carers.trust

Comfort Break

**CARERS
TRUST**

No Wrong
Doors for
Young
Carers



@carerstrust



@carerstrust



@carers.trust

Stakeholder Perspectives

- Helen Lincoln, Chair of the ADCS Families, Communities and Young People Policy Committee
- Beverley Tarka, ADASS President
- Amanda Stride, Deputy Director – Local Authority Assessment Delivery, Care Quality Commission
- Jeremy Gleaden, Senior HMI, Social Care Policy, Ofsted

**CARERS
TRUST**

No Wrong
Doors for
Young
Carers



@carerstrust



@carerstrust



@carers.trust

Association of Directors of Children's Services (ADCS)

“Children and young people with caring responsibilities can face unique challenges. We want to support them to live a happy, fulfilling life and to be able to access the same opportunities as their peers, they deserve nothing less. The aims and approaches set out in the MoU apply to all young carers, whether they are caring for a significant adult, or a sibling. The aim here is to help children's and adult services to work more closely together, and with health and education services as well, to take a whole family approach in meeting needs. Children and young people themselves tell us what a difference joined up approaches can make when there is a clear and shared focus on their experiences and their outcomes and the latest version should make that easier than ever.”

Helen Lincoln, Chair of the ADCS Families, Communities and Young People Policy Committee

How Can No Wrong Doors for Young Carers Support ASC, Young Carers and Families

Beverley Tarka

Director of Adults, Health and Communities, Haringey Council.

ADASS President

Carers are Our Priority

- Carers, an ADASS priority and my Presidential priority
- The Carers Challenge
www.adass.org.uk/carers-challenge-23
- As a General Election approaches what is our ask for carers?

Time for a Refresh and Rethink

- ‘No Wrong Doors’ refresh a priority.
- 4th Edition and 15yrs on from the first.
- A timely update as the landscape has changed.
- The significance of stakeholder signatories.

Why is it Still Important?

- Behind the governance.
- The data and peoples stories tell us it's important.
- No one can do it on their own.

**CARERS
TRUST**

No Wrong
Doors for
Young
Carers



@carerstrust



@carerstrust



@carers.trust

Stakeholder Perspectives

**Amanda Stride, Deputy Director –
Local Authority Assessment Delivery,
Care Quality Commission**

**CARERS
TRUST**

No Wrong
Doors for
Young
Carers



@carerstrust



@carerstrust



@carers.trust

Stakeholder Perspectives

**Jeremy Gleaden, Senior HMI, Social Care Policy,
Ofsted**

**CARERS
TRUST**

No Wrong
Doors for
Young
Carers



@carerstrust



@carerstrust



@carers.trust

Q and A

**CARERS
TRUST**

No Wrong
Doors for
Young
Carers



@carerstrust



@carerstrust



@carers.trust

Closing remarks

Simon Williams

Partners in Care and Health

Director of Adult Social Care Improvement

Please complete the [short feedback form](#)